

HD POE Network Kit

Quick Setup Guide

Thank you for purchasing our products!

Declaration

- ★ This manual may contain inaccurate data or printing error.
- ★ The products described in this manual may be updated at any time.
- ★ Screenshots of the manual is not in a machine and only for display.
- ★ If in doubt, obtaining a copy of the latest procedure or the additional document, please contact with the company's after-sales department.

Important Safeguards and Warnings

★ 1. Electrical safety

All installation and operation should conform to your local electrical safety codes. We assume no liability or responsibility for any fires or electrical shock caused by improper handling or installation.

★ 2. Transportation security

Heavy stress, violent vibration or water splash should be avoided during transportation, storage and installation.

★ 3. Installation

Keep upright. Handle with care.

Do not apply power to the NVR before completing installation.

Do not place objects on top of the NVR.

★ 4. Qualified engineers needed

All examination and repair work should be done by qualified service engineers.

We are not liable for any problems caused by unauthorized modifications or attempted repair.

★ 5. Environment

The DVR should be installed in a cool, dry place away from direct sunlight and inflammable or explosive substances, etc.

This product should be transported, stored and operated in an environment ranging from 0℃ to 55℃.

★ 6. Accessories

Before installation, please open the package and check all the components are included.

Contact your local Maplin outlet if something is broken or missing in your package.

★ 7. Lithium battery

Improper battery use may result in fire, explosion, or personal injury.

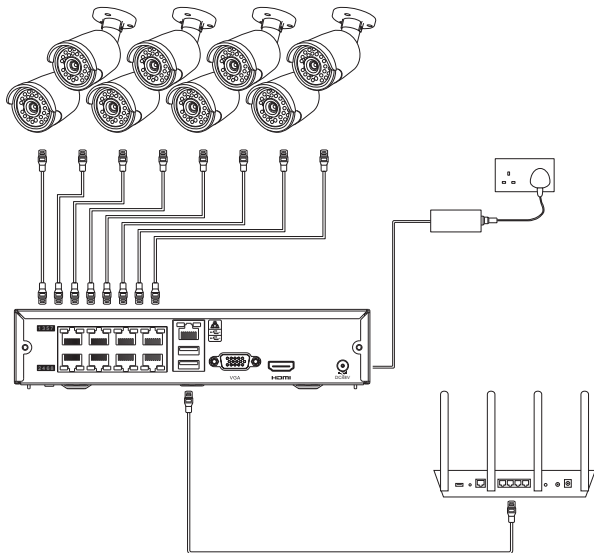
When replacing the battery, please make sure you use the same model. (CR2032 Motherboard battery).

Unpacking Inspection

When you receive the product please check that all items are present according to the packing list on the reverse of the box.

No.	Item	Quantity	Unit
1	POE NVR	1	pcs
2	POE IP Camera	4/8(8ch kit)	pcs
3	48V/1.35A power supply(for NVR)	1	pcs
4	USB mouse	1	pcs
5	60 feet network cable	2/4(8ch kit)	pcs
6	100 feet network cable	2/4(8ch kit)	pcs
7	Quick setup guide	1	pcs
8	Hex wrenches	1	pcs
9	Screw bag(for HDD)	1	pcs
10	Screw bag(for IP Camera)	4/8(8ch kit)	pcs
11	Location sticker(for IP camera)	4/8(8ch kit)	pcs

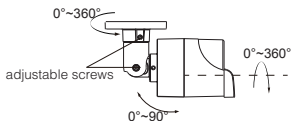
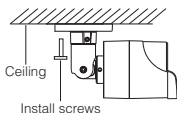
Installation diagram



Installation Guide

1 IP Camera

- ① The series camera is in the integrated brackets structure. Please use 3pcs PA4 screws to fix the basement of the camera at the installation location.
- ② To loosen the camera body's screws to adjust the three-axis. Adjust the connection between brackets and basement by axis to implement $0^{\circ}\sim 360^{\circ}$ in the horizontal direction; Adjust the spherical joint of brackets can achieve $0^{\circ}\sim 90^{\circ}$ in the vertical direction and $0^{\circ}\sim 360^{\circ}$ in the rotational direction. Please tighten the screws after adjusting the camera image to the right scene. All the installation has finished.



⚠ [Attention] Wall installation should be with a certain thickness and stand triple weight of the camera at least.

2 HDD Installation

Tools: A cross screwdriver

- ① Remove the screws of the device and disassemble the cover



- ② Install the HDD into the HDD bracket and connect the HDD cable



Installation Guide

- ③ Fix the HDD at the bottom of the chassis



- ④ Close the cover and assemble the screws to fix the cover

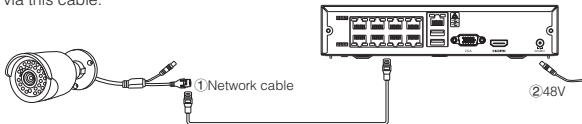


⚠ [Attention]

- The environment temperature should be below 35 °C.
- Make sure there is a 15 cm (6 inches) space around the device to ventilate.
The initial installation please check whether it has installed HDD. There are several interfaces it means you can install several SATA interface HDDs.
- Our equipment will format the HDD once it boots up, please back up the HDD data.
- The notes for purchasing HDD: We recommend that to use the surveillance HDD. It is suitable for long time, large amount of data to read and write. Please purchase from the official channels to ensure the quality.

③ Run System

- 1) Take the network cable out of the accessories box, then connect camera and NVR via this cable.



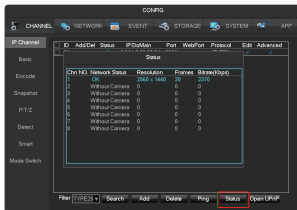
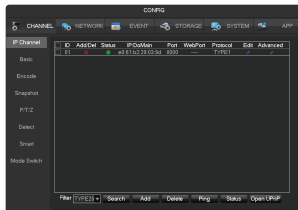
Installation Guide

- 2) Take the adapter out of the accessories box and power on the NVR after all cameras are connected to NVR's POE ports. Waiting about 45 seconds, the video will come.



[Attention]

- If the distance between IP camera and NVR is more than 100 feet, then camera needs 12V adapter. The camera and NVR can be connected via LAN.
- Add / Delete camera menu: [MAIN MENU] > [CHANNEL] > [IP Channel], here also can find the IP camera's status.



Remote Control and Cloud Service

1 Install APP

urn on the device power, you will find a 'Startup Wizard' displayed on your monitor. Scan the corresponding QR code to download the app.



VSS WEB

More help please visit
www.vssweb.net



Android App

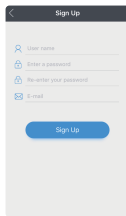
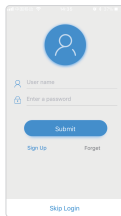
We support Android2.1 and higher versions, IOS4.3 and higher versions.



IPhone App

2 Register VSS Account

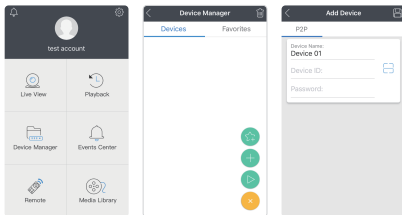
Run the APP, click "Register Now", and add device after login in.




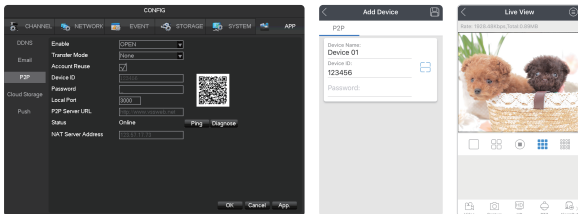
Remote Control and Cloud Service

3 Add device

1) Click Device Manager button , then click  to add device.




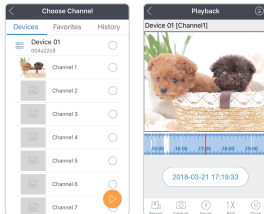
2) Add device: click scan button , scan the NVR's P2P code, or you can enter the P2P ID and password. After add device successfully, you can go to the [live view] page to live view anywhere.



Remote Control and Cloud Service



4 Remote Playback

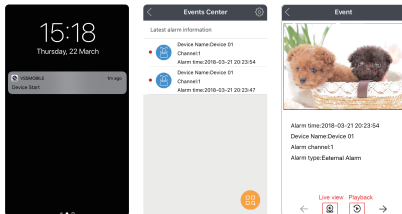
Click playback button  to go to the playback menu, then choose device name, channel and time to search the video.



5 Event message

Once the alarm is triggered, events message will be sent to smart phone automatically. You can search the history messages in [Events Center]. Click the event you will see more details. There are two buttons at the bottom of this page.

- Click the live view button  will turn to the live view page.
- Click the playback button  will playback a short video to show what happened before.



Statement

- This manual describes basic operations. More details please refer to the main manual found in the CD accompanying the attachments.
- Any doubt or dispute in product description, the company interpretation will ultimately prevail.
- This Quick Setup Guide is for quick reference to certain DVR/NVR models, the specific operation of each product is not listed, when you have encountered any difficult problems, please contact us.

